

GILDERLAND FIRE DIST.
GILDERLAND, NY
SO.134160
 AERIAL BODY
 CYCLONE II X CHASSIS
 100' PLATFORM

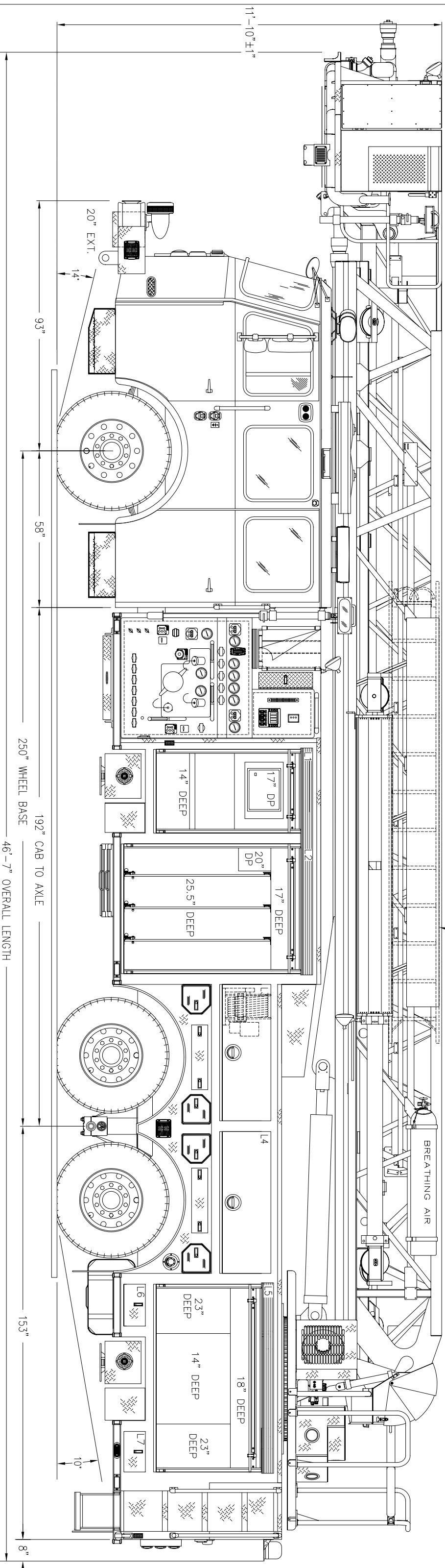
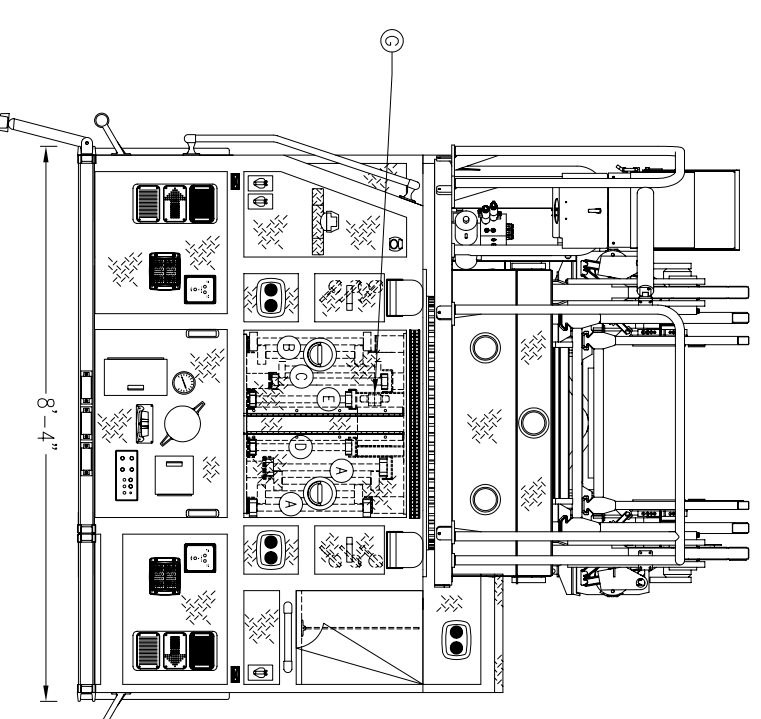
THIS DRAWING IS FOR REFERENCE PURPOSES. ALL DIMENSIONS ARE SUBJECT TO MINOR VARIATIONS DUE TO MANUFACTURING PROCESSES.

APPROVED FOR PRODUCTION

DESIGNER: B. MASON DATE: 2008-MAR-25

COMPT.	OPENING	INTERIOR DIMENSION	HOSE LOAD:	
			200' OF 1.75" DJ	200' OF 1.75" DU
L1/R1	29W 48H	31W 28H 17D 31W 29H 14D 48W 15H NOTED 54H NOTED	UPPER	LOWER
L2/R2	46W 60H	48W 54H NOTED	UPPER	LOWER
L3	50W 18H	50W 18H	26D	
R3	13W 24H	15W 32H	23D	
L4	52W 18H	52W 18H	20D	
R4	31W 20H	31W 20H	14D	
R5	34W 24H	36W 32H	23D	
L5	67W 34H	69W 15H 18D 69W 27H NOTED	UPPER LOWER	
L6	15W 8H	15W 8H	23D	
L7	15W 8H	15W 8H	23D	

ITEM	LADDER LENGTH	MODEL NUMBER	QTY
A	35' 2-SECT.	PEL-35	2
B	28' 2-SECT.	PEL-28	1
C	24' 2-SECT.	PEL-24	1
D	20' ROOF	PRL-20	1
E	16' ROOF	PRL-16	1
F	14' ROOF	PRL-14	1
G	10' FOLDING	FL-10	1



REV	DATE	DESCRIPTION	BY	APP
108				
109				
110				
111				
112				
113				
114				
115				
116				
117				
118				
119				
120				
121				
122				
123				
124				
125				
126				
127				
128				
129				
130				
131				
132				
133				
134				
135				
136				
137				
138				
139				
140				
141				
142				
143				
144				
145				
146				
147				
148				
149				
150				
151				
152				
153				
154				
155				
156				
157				
158				
159				
160				
161				
162				
163				
164				
165				
166				
167				
168				
169				
170				
171				
172				
173				
174				
175				
176				
177				
178				
179				
180				
181				
182				
183				
184				
185				
186				
187				
188				
189				
190				
191				
192				
193				
194				
195				
196				
197				
198				
199				
200				